



# ResinMold® Flexible Moulding Fill in Forms Circle, Arches, Curves

ResinMold® is a synaptic polymer with memory. There are 1000's of profiles for curves, arches and circles. Everyone of our Casing, Brickmold, Baseboards, Panel Molds, Frieze can be made from ResinMold®. It comes primed ready to paint or stain with a gel stain.



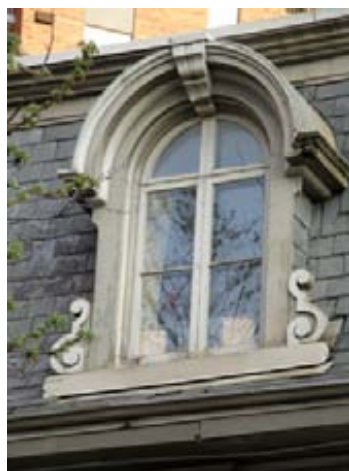
Send us Tracing or photos for Moulding Matching



Arches are made as per the radius. Although it is flexible you cannot bend it in place without it splitting over time. Measure the radius from the inside of the arch.



Eye-brow Arches are made as per the radius as well. You can order matching straight profiles for vertical casing needs.



Complex Crown arches require special attention. Contact our Sales department for guidance.

Note:  
Minimum Radius 3 x the Width

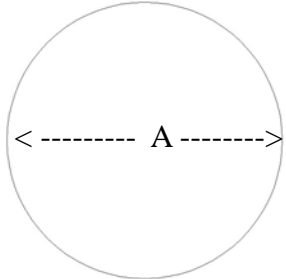




# ResinMold® Flexible Moulding Circular Windows or Column Bases/Caps

Plan View

## 1) CIRCLE



Diameter A \_\_\_\_\_

or Circumference \_\_\_\_\_

# of Circles \_\_\_\_\_

A= Diameter of Circle \_\_\_\_\_  
Inside Diameter

or Circumference  
Run a string and give us the length

How many Circles \_\_\_\_\_

Wood Grain or Smooth

COMPANY \_\_\_\_\_

Name: \_\_\_\_\_

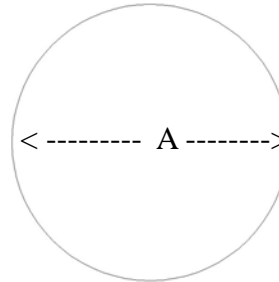
ADDRESS \_\_\_\_\_

EMAIL \_\_\_\_\_

PHONE \_\_\_\_\_

PROJECT TAG: \_\_\_\_\_

## 2) COLUMN BASE / CAP



A= Diameter of Column Shaft  
\_\_\_\_\_

Outside Diameter

or Circumference  
Run a string and give us the length

How many Columns \_\_\_\_\_

Wood Grain or Smooth



[www.imperialproductions.com](http://www.imperialproductions.com) 1-800-399-7585, 416-264-6097 Fax 416-264-6098

Imperial Productions & Distribution Inc Toronto / New York

email [sales@imperialproductions.com](mailto:sales@imperialproductions.com) copyright 2016 MRDCI All Rights Reserved

Vol 7: JUL-20

# ResinMold® Install Notes ... The solution to Trim Arches and Curves



## 1) Open the ResinMold®

Lay it out and allow it to warm up if cold. If made to a radius arch, it will form to the radius as the material has memory. Check the measurements as per your order.



## 2) Pre-Finishing

Do not prefinish the material prior to installation. The material may flex during installation and cause fractures in the finish.

## 3) Substrata Surface or Base

Since the material is flexible it will take the form of the base. If there are concave or convex bows in the base the material will follow these imperfections. Thus, the surfaces should be plum, clean, and even.

## 4) PreDetermine Placement or Layout

For angles, you can cut the material with any type of saw. Hold material firmly to table or fence when cutting.



## 5) Apply Adhesive

Use approved adhesive on back surface area.



## 6) Brad Nailer (do not use screws or nails)

When using a brad nailer try to affix them to indents or use the side of the moulding. They will sink into the material but may leave a small indentation which can be easy filled later.



### Caution:

Use a probe for any hidden electrical wires or water pipes inside the wall before brad nailing.

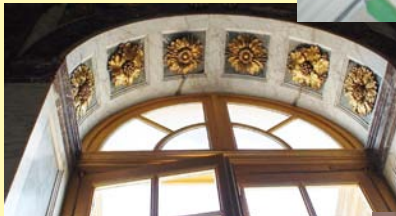
## 7) Allow to Dry then Paint

Once dried apply polyspackling compound for gaps between the wall and the moulding or joins between pieces. The material is primed ready for paint or stain.



## 8) Paint or Stain

Once dried faux finish or paint



These notes are suggestions only - consult with a professional for installations of complex situations.



Imperial Productions®

1-800-399-7585

Imperial Productions & Distribution Inc Toronto / New York

email sales@imperialproductions.com copyright 2016 MRDCI All Rights Reserved

JUL 2020